



Pakistan R-PP

TAP Comments & Recommendations

December 2013

PC 16 Geneva, Switzerland

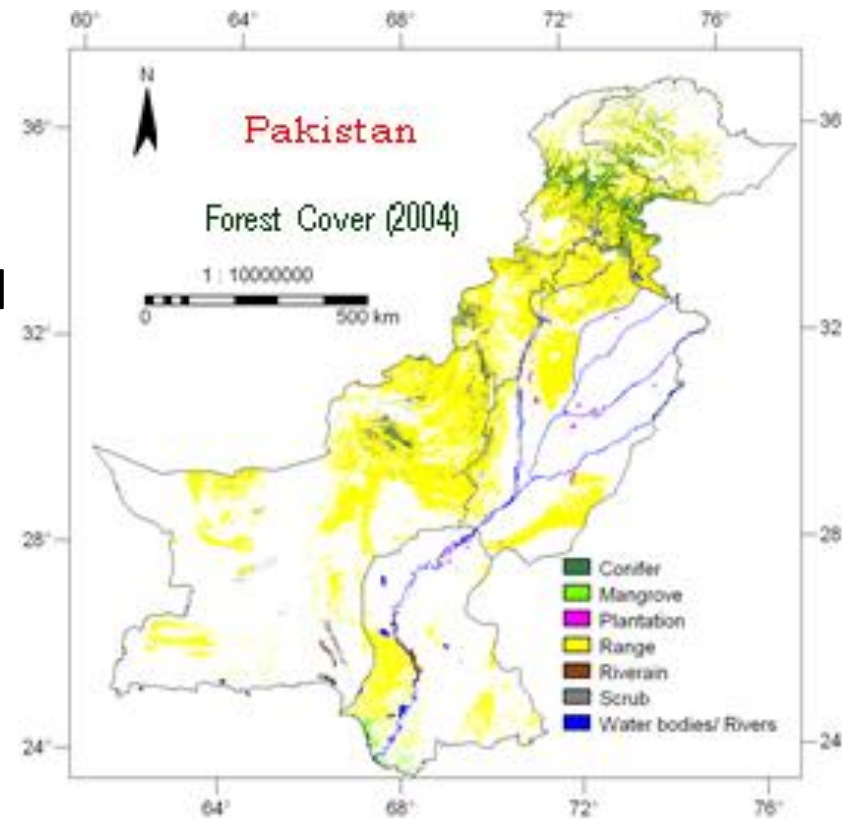
Syed Sajidin Hussain

Jayant Sathaye

and 5 Reviewers

Country Context

- Total area: 84 million ha (dry land)
- Forest area: 4.4 million ha (5.1% of the total area)
- Natural forest: 78% of the total forest area.
- Current rate of deforestation of natural forests is 27,000 ha/year.
- The threat of accelerated natural forest degradation and deforestation, is caused by:
 - Rising wood demands (timber/fuel),
 - Weak governance and land use rights
 - Encroachments/ land cover change
 - Climate Change additional challenge



Strengths of R-PP

- Overall the **R-PP is comprehensive, well written** and the contents under each component have responded to the terms of reference in the R-PP Template.
- The **existing management structure** (federal and provincial level) have been proposed for the REDD+ implementation.
- **Key issues**, drivers of deforestation and forest degradation **and associated strategy options** are well conceived.
- As a result of a number of consultations at various levels, **significant awareness and ownership** is taking place to stop deforestation and overall land degradation.
- It is encouraging that a **Cabinet level interaction and participation** has been **ensured** for successful operation of REDD+ program, especially critical for cross-sectoral enforcements.

TAP Reviewers' Assessment

Components	First Review (October 2013)	Second Review (November 2013)
1a	<i>Partially met</i>	Largely Met
1b	<i>Largely met</i>	<i>Largely met</i>
1c	<i>Largely met</i>	<i>Largely met</i>
2a	<i>Partially met</i>	Met
2b	<i>Partially met</i>	Met
2c	<i>Largely met</i>	Met
2d	<i>Largely met</i>	Met
3	<i>Partially met</i>	Met
4a	<i>Partially met</i>	Met
4b	<i>Partially met</i>	Met
5	<i>Partially met</i>	<i>Largely met</i>
6	<i>Partially met</i>	<i>Largely met</i>

Areas needing further work

- Component 1a: the current **Steering Committee has to be balanced** to include forestry and non-forestry development sectors e.g., energy, land use, mining, tourism etc.
- Component 1a: the **organizational chart is not portrayed well**, coordination mechanisms are not clear in the chart and not discussed in the text.
- Component 1b: The process for **stakeholder mapping/ analysis was limited in scope and coverage** which needs to be re-assessed in future studies accurate response.
- The component 1-c: needs a brief **synthesis on the level of ownership** the R-PP has generated in Pakistan, especially at provincial levels.
- Schedule and **Budget R-PP Template Version 6 was not included** in the revised R-PP (component 5).
- The program monitoring and evaluation framework would benefit by presentation in a log frame format (Component 6).



Concluding Remarks

- It was **impressive to note that Pakistan delivered R-PP in a very short period of time** (in less than a year) and constructively responded to TAP review recommendations well in time.
- **Second TAP review recommendations have been incorporated with remarks for future compliance** in REDD+ implementation phase. This seems appropriate but would **need closer monitoring**.



Thanks